

AMPMODU MTE, pin spacing 0.1"

- 1 - TTL trigger input
- 2 - Logic ground / GND
- 3 - +5.00 VDC (+/- 3%, <600 mA)
- 4 - Fault signal output, L=fault
- 5 - Logic ground / GND

All dimensions in mm and (inches).  
 All data and dimensions subject to change without notice.  
 Recommended diameter for attachment holes 4mm (0.16)

Änderung	Datum	Name		
			Gez.	TM
			Datum	27.09.2011
			Gepr.	UW
			Datum	27.09.2011
			M 1:1 (DIN A4)	

**41-03-GSM**

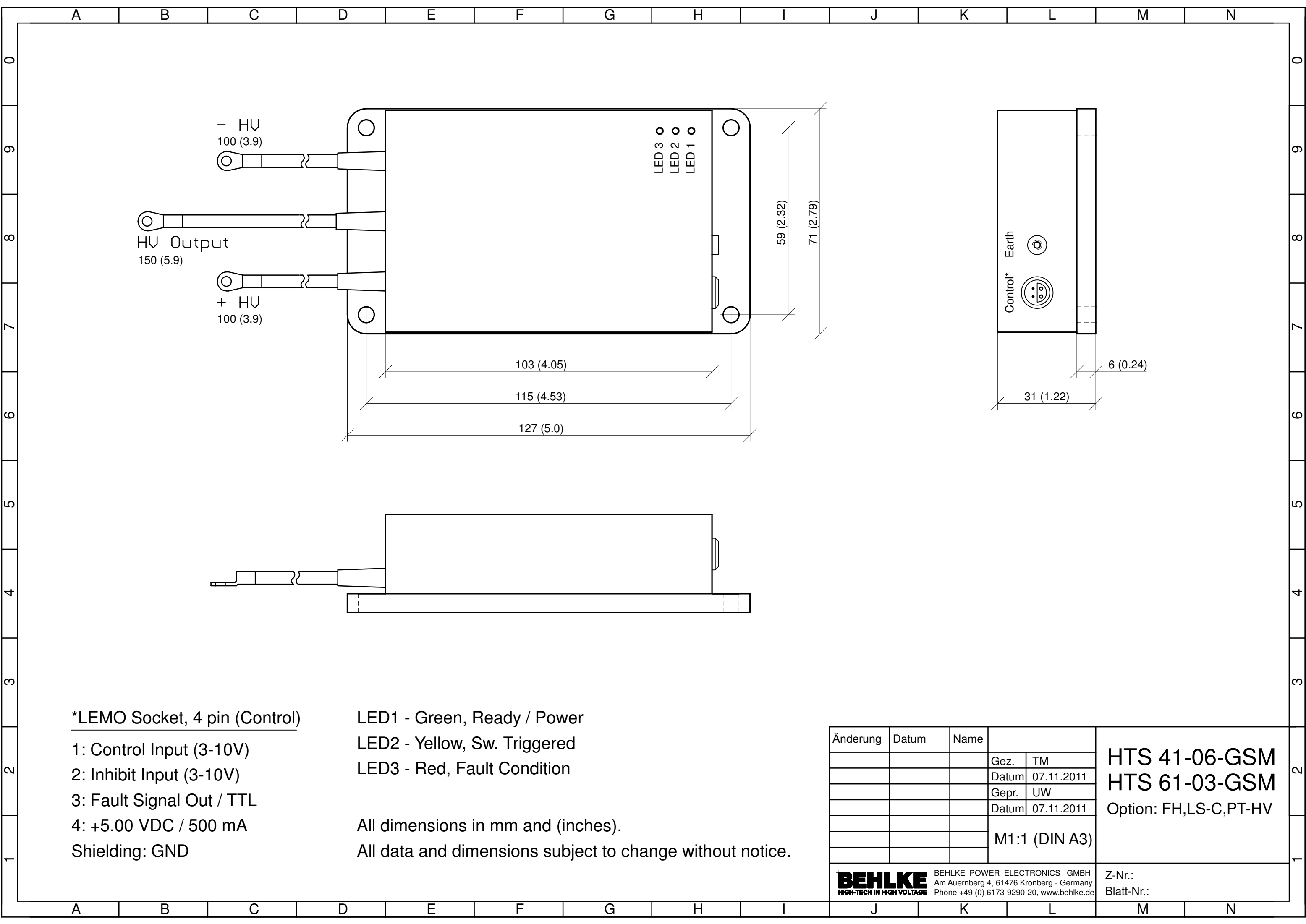
**41-06-GSM**

**61-01-GSM**

**61-03-GSM**

Z-Nr.:

Blatt-Nr.:



\*LEMO Socket, 4 pin (Control)

- 1: Control Input (3-10V)
  - 2: Inhibit Input (3-10V)
  - 3: Fault Signal Out / TTL
  - 4: +5.00 VDC / 500 mA
- Shielding: GND

- LED1 - Green, Ready / Power
- LED2 - Yellow, Sw. Triggered
- LED3 - Red, Fault Condition

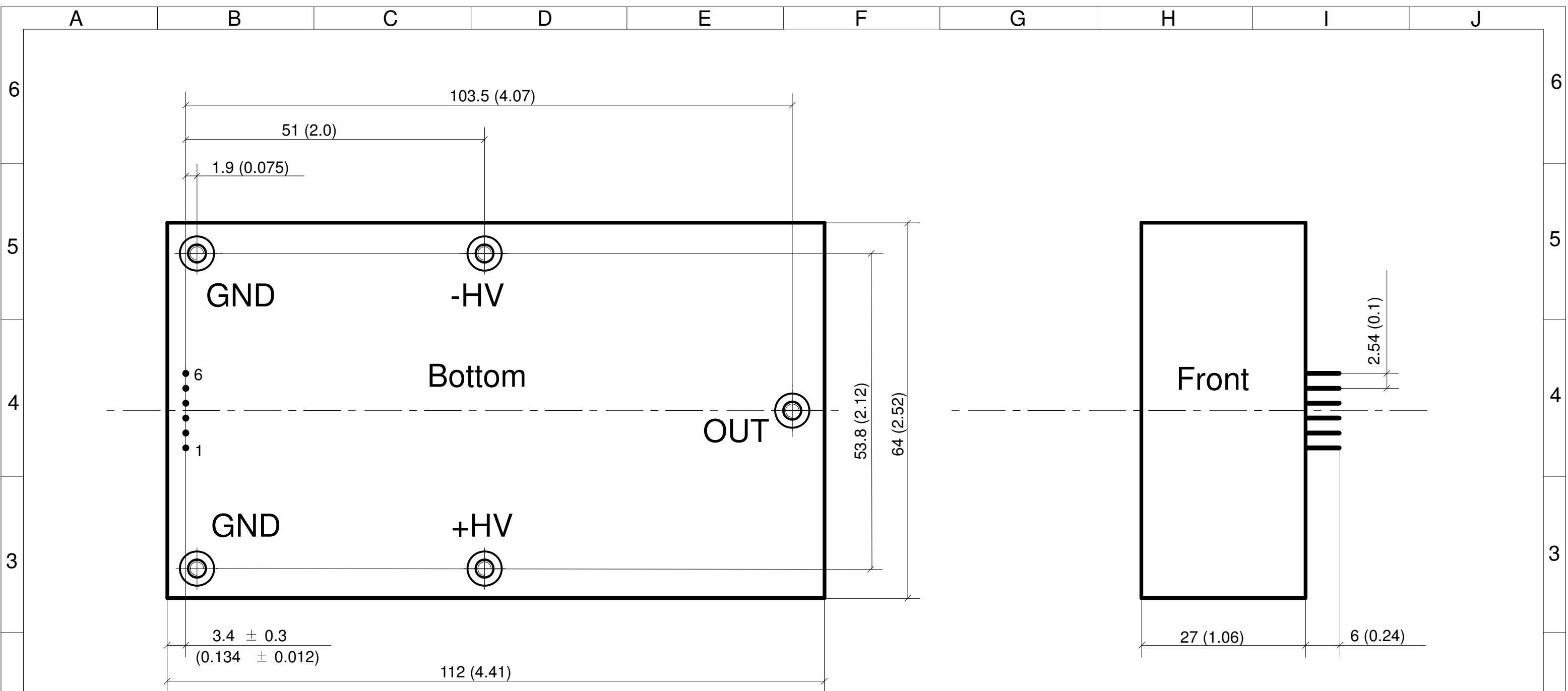
All dimensions in mm and (inches).  
 All data and dimensions subject to change without notice.

Änderung	Datum	Name		
			Gez.	TM
			Datum	07.11.2011
			Gepr.	UW
			Datum	07.11.2011
			M1:1 (DIN A3)	

**HTS 41-06-GSM**  
**HTS 61-03-GSM**  
 Option: FH,LS-C,PT-HV

**BEHLKE** BEHLKE POWER ELECTRONICS GMBH  
 Am Auernberg 4, 61476 Kronberg - Germany  
 Phone +49 (0) 6173-9290-20, www.behlke.de

Z-Nr.:  
 Blatt-Nr.:



All dimensions in mm and (inches).

Note:

Recommended diameter for terminal/attachment holes 4mm (0.16)  
 Recommended diameter for pin holes 1.5mm (0.06)  
 Pin diameter 0.8 (0.032)

Pin1 - Trigger (TTL)                      Pin5 - Reserved/N.C.  
 Pin2 - GND (Logic)                        Pin6 - Reserved/N.C.  
 Pin3 - + 5.00 VDC  
 Pin4 - Fault Signal

Änder.	Datum	Name			61-03-GSM Opt.: PIN-C
			Gez.	TM	
			Dat.	29.11.04	
			Gepr.	FB	
			Dat.	29.11.04	Z-Nr.:
<b>Scale 1:1</b>					
<b>BEHLKE ELECTRONIC GMBH</b>					Blatt: 1/1
<small>Postfach 190249, D-60089 Frankfurt, Fax (069)733179</small>					