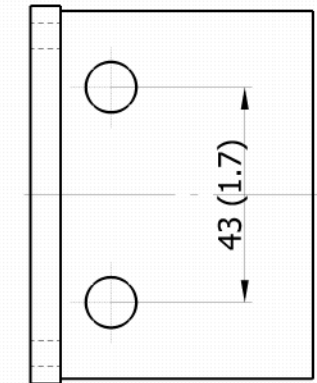
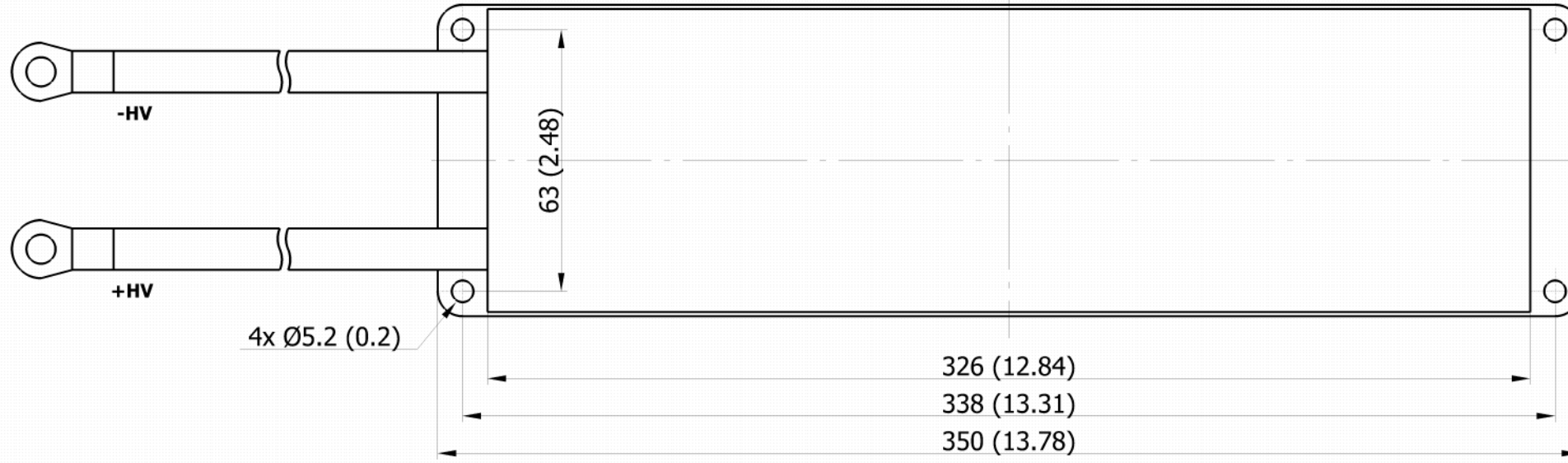
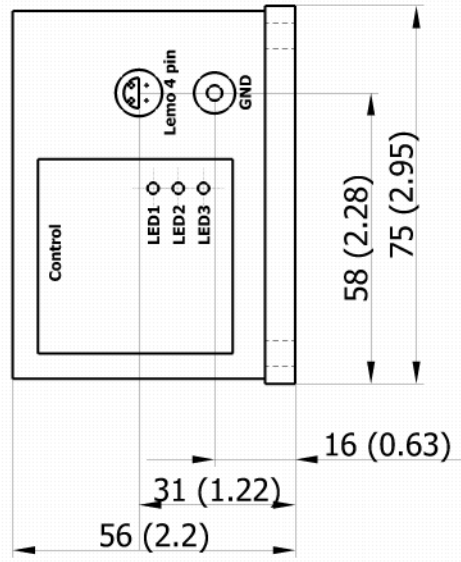
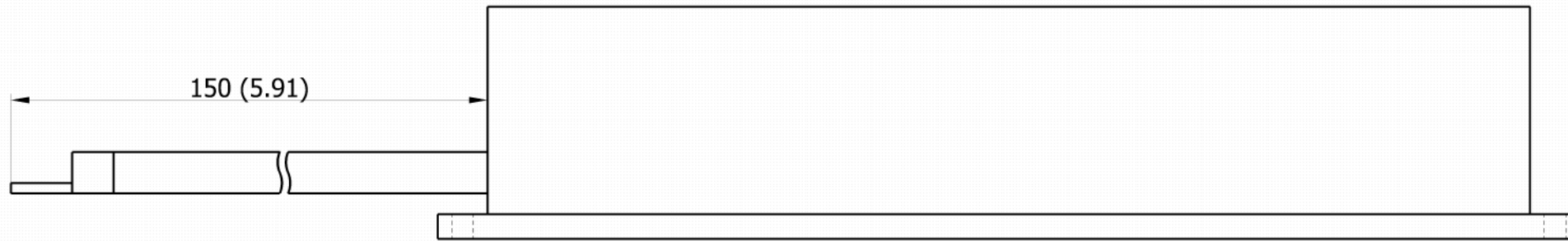


A B C D E F G H I J K L M N

0
9
8
7
6
5
4
3
2
1

0
9
8
7
6
5
4
3
2
1



Lemo, 4 pin (Control)
1. Control Input (3-10V)
2. Inhibit Input (3-10V)
3. Fault Signal Out / TTL
4. +5.00 VDC / 500 mA
Shielding: GND

LED1 Red, Fault Condition
LED2 Yellow, Triggered
LED3 Green, Ready / Power

Drawing (projection) according to DIN standards.
All dimensions in mm and (inches).
All data and dimensions subject to change without notice.

Änderung	Datum	Name		
			Gez.	ML
			Datum	18.09.2015
			Gepr.	ML
			Datum	18.09.2015
			M 1:2 (DIN A3)	

401-10-LC2
401-20-LC2

BEHLKE
 HIGH-TECH IN HIGH VOLTAGE
 BEHLKE POWER ELECTRONICS GMBH
 Am Auernberg 4, 61476 Kronberg - Germany
 Phone +49 (0) 6173-9290-20, www.behlke.com

Z-Nr.:
 Blatt-Nr.:

A B C D E F G H I J K L M N